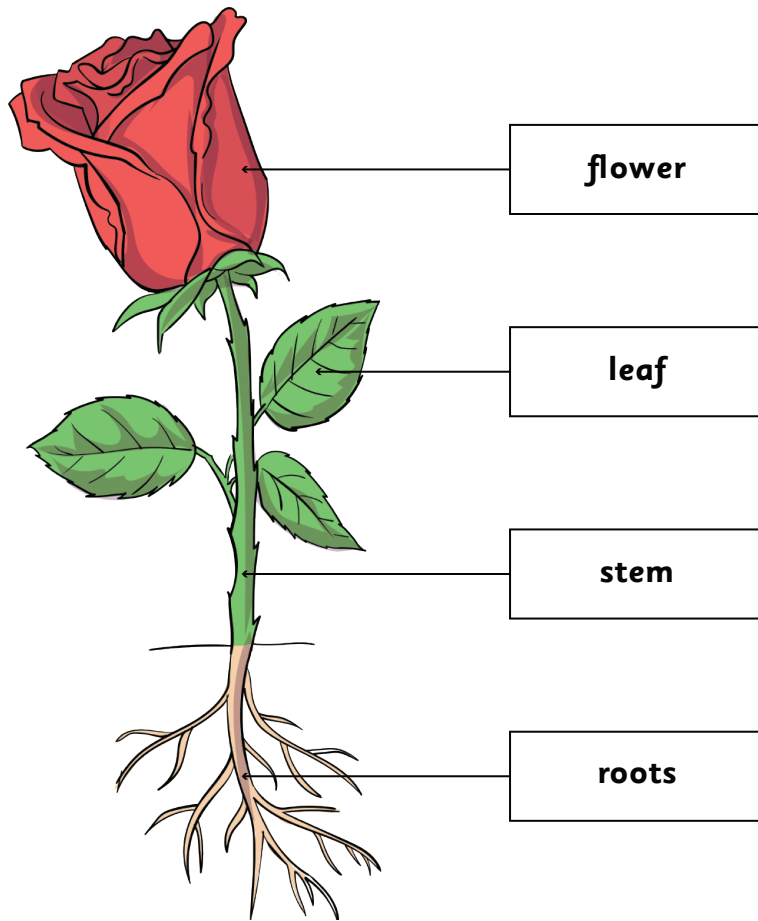


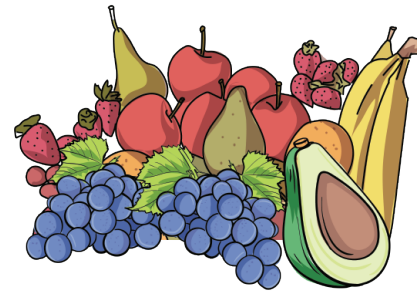
Plants Knowledge Organiser

Parts of a plant



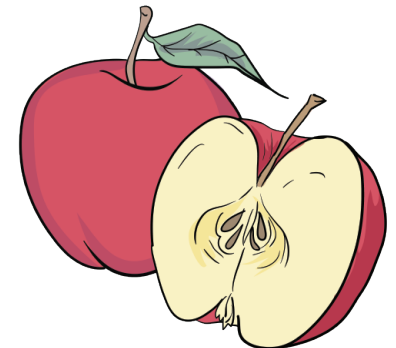
Plants we eat

The plants that we eat are called **fruits and vegetables**.
Fruits and vegetables grow in the **same way** as other plants.



How do plants grow?

Plants grow from **seeds**. Seeds come in all **shapes and sizes**.



How to grow a plant?

First, we need a **plant pot**.



Then, we put **soil** in our pot.



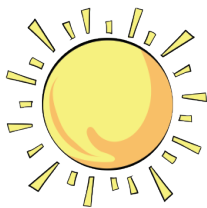
Next, we make a little hole and put our **seed** in.



After that, we **water the soil**. Not too much!



Finally, we leave our pot **somewhere sunny**.



Types of trees

Trees are **types of plants** too.

They grow from **seeds**.

They have **leaves**.

They have **roots**.

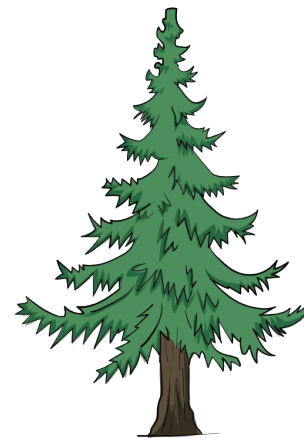
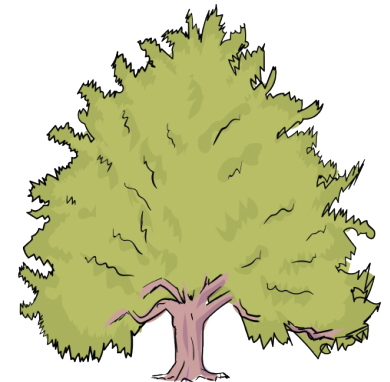
They have a big, thick 'stem' called a **trunk**.

Some trees grow **fruits or flowers**.

Deciduous Trees

Deciduous trees **lose their leaves** each year.

They grow back again though.



Evergreen Trees

Evergreen trees **don't lose their leaves** at all.

They keep them all year round, even in winter.